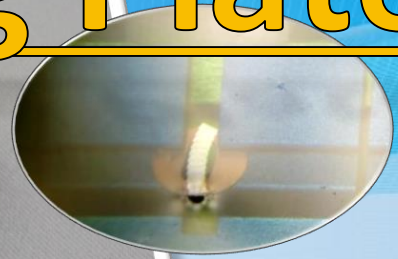
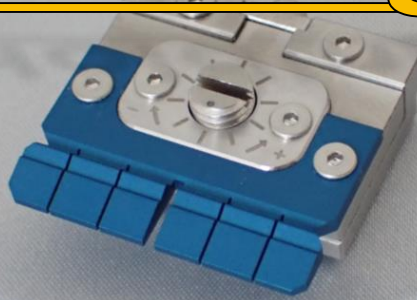
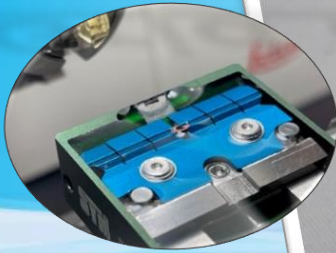


Diamond Knives

※Patent pending item

for Ultra Microtome

Grid Holding Plate



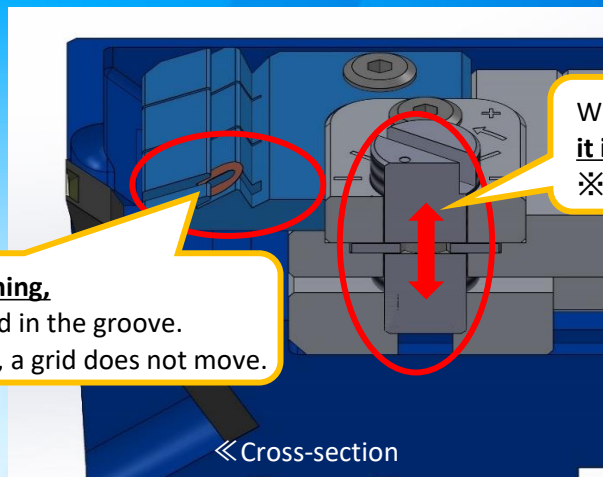
SYM JUMBO

for



SYM JUMBO WT

- ◆ Collect sections without wrinkles and burst
- ◆ Bring "Scoop-up method" into reality
- ◆ Collecting "Ribbon" very easily



When the screw is rotated,
it is possible to adjust height of the plate!
※Easy to adjust because of tick mark.

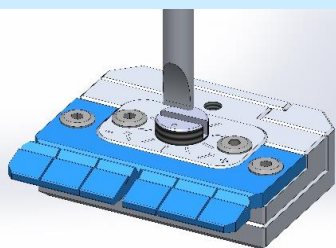
It is easy to collect sectioning,
because a grid is well fitted in the groove.
※Even if water is drained, a grid does not move.

◀ Cross-section

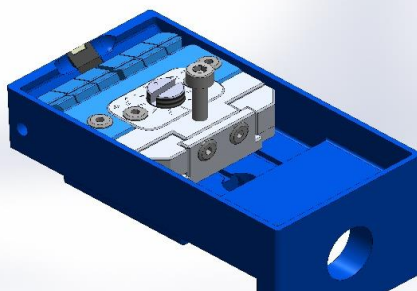
~Features of a Plate~

1. Can be free one of your hands, due to fix grids
2. Set on proper height by adjustment screw
3. Easy to remove grids by ergonomic groove angle

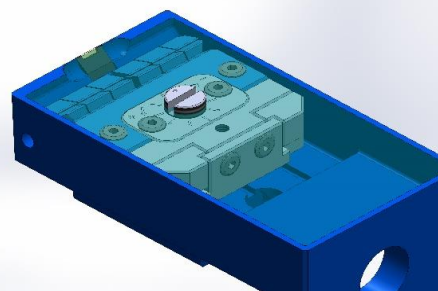
How to use Grid Holding Plate



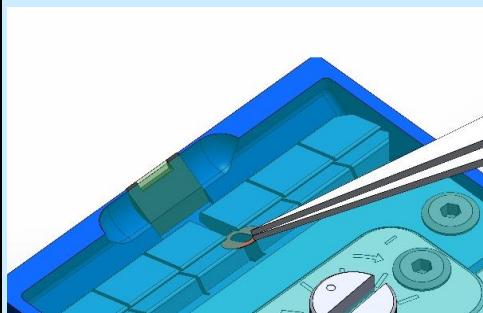
1. Adjust height of plate by adjustment screw before using.
See the tick mark on plate.



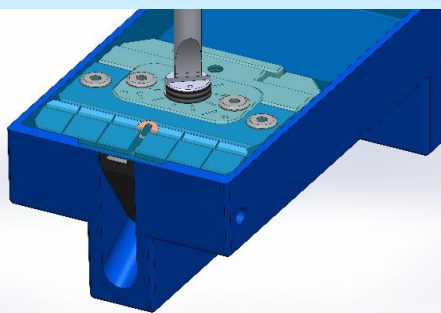
2. Set the plate into boat of SYM Jumbo.
(or SYM Jumbo WT).



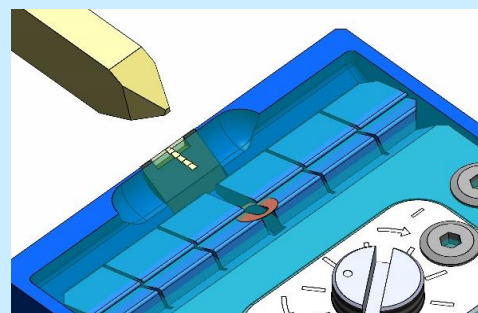
3. Fill knife's boat with water as usual.



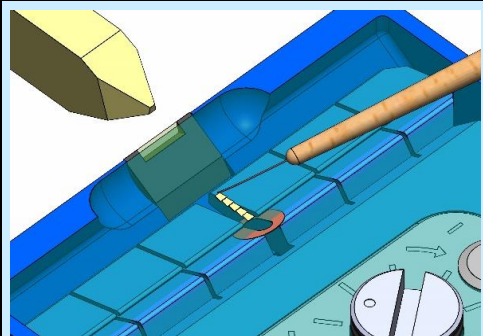
4. Insert the grid into the groove.



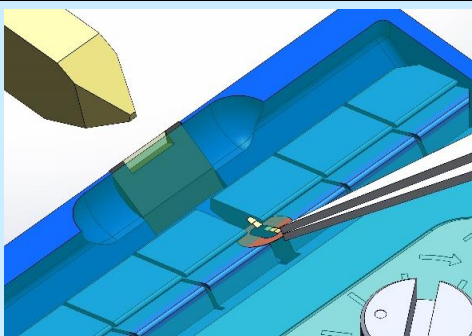
5. You can readjust the height if you want.



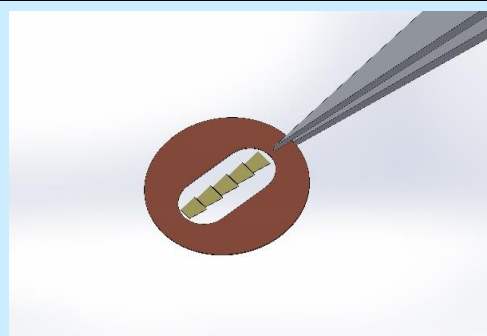
6. Start sectioning as normal.



7. Pull sections (ribbon) by probe (or others) closer to grid.



8. Remove a grid by tweezer along the angle of the groove, when first section touches an edge of grid.



9. You will get perfect sections without wrinkles.

Grid Holding Plate mounts on the following knives

SYM JUMBO			SYM JUMBO WT		
Ultra Wet			Ultra Wet		
Item No.	Angle	Width	Item No.	Angle	Width
SYM3045JS	45°	3.0mm	SYM3045WT	45°	3.0mm
SYM2545JS	45°	2.5mm	SYM2545WT	45°	2.5mm
SYM2045JS	45°	2.0mm	SYM2045WT	45°	2.0mm
SYM2035JS	35°		SYM2035WT	35°	
Histo Wet			Histo Wet		
SYM3045HJS	45°	3.0mm	SYM3045HWT	45°	3.0mm
SYM3050HJS	50°		SYM3050HWT	50°	

Useful Gadget from
"Beginner to Expert"



Syntek Co., Ltd. / Japan

