

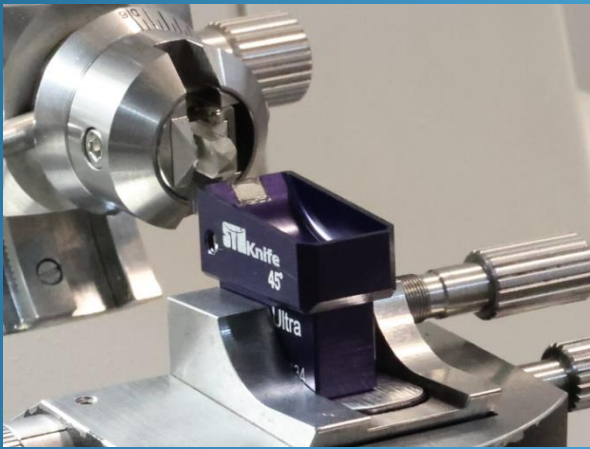


Diamond knives

100% made in Japan

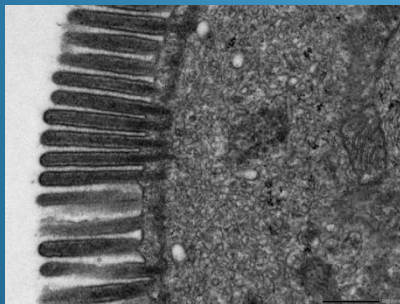
SYNTEK's diamond knives (SYM knives) are manufactured in Japan.

- ✓ Flexible and adaptable
- ✓ Hydrophilic treated from the beginning up to 3 years
- ✓ There's more to Knives change than technology

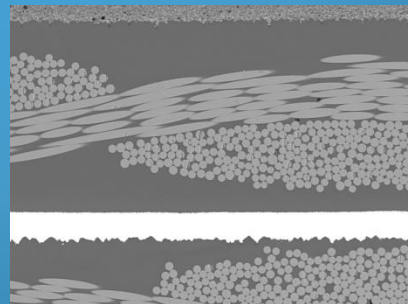


The angle of 50° for Histo combines the durability that can be used as trimming and the sharpness that allows 0.2 μm sample preparation.

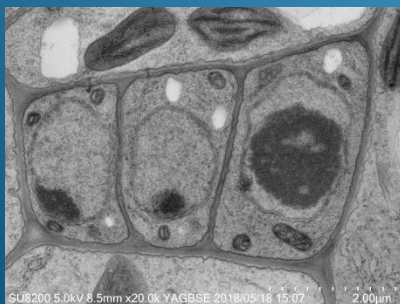
All products are cutting tested before shipment. Only those that passed are shipped.



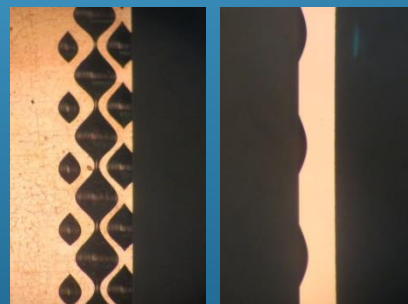
Biology (Creature)
TEM image of small intestine of mouse, 70nm,
Used tool :
SYM3045 (**Ultra**)



Material(Glass epoxy)
SEM image of cross section of glass-epoxy board and copper,
Used tool :
SYM3050H(**Histo**)



Biology (Plant)
FE-SEM image of Arabidopsis thaliana, 200nm,
Used tool :
SYM3050H(**Histo**)



Material(Cu)
Optical microscope image of cross section of copper plating for gravure printing cylinder,
Used tool :
SYM3050H(**Histo**)

(C) RIKEN IMS, Dr. Takeshi Matsui & Hachiro Iseki
(C) RIKEN CSRS, Dr. Kiminori Toyooka

(surface) (cross section)
*It gives damage to the cutting edge.





Ultra 35° & 45°



Histo 50°



Description	Angle	Width (mm)	Model No.	New	exchange	
Ultra (Wet) The recommended range 200nm to 30 nm	35°	1.0 (1.0-1.2)	SYM1035	○	○	
		2.0 (2.0-2.2)	SYM2035	○	○	
	45°	1.0 (1.0-1.2)	SYM1045	○	○	
		2.0 (2.0-2.2)	SYM2045	○	○	
		2.5 (2.5-2.7)	SYM2545	○	○	
		3.0 (3.0-3.2)	SYM3045	○	○	
	45°	4.0 (4.0-4.2)	SYM4045	○	○	
		2.0 (2.0-2.2)	MGH2035	○	○ holder will be reused	
		2.0 (2.0-2.2)	MGH2045	○	○ holder will be reused	
		2.5 (2.5-2.7)	MGH2545	○	○ holder will be reused	
	45°	3.0 (3.0-3.2)	MGH3045	○	○ holder will be reused	
		4.0 (4.0-4.2)	MGH4045	○	○ holder will be reused	
		35°	2.0 (2.0-2.2)	SYM2035J	○	○ holder will be reused
		45°	2.0 (2.0-2.2)	SYM2045J	○	○ holder will be reused
	2.5 (2.5-2.7)		SYM2545J	○	○ holder will be reused	
	3.0 (3.0-3.2)		SYM3045J	○	○ holder will be reused	
	4.0 (4.0-4.2)		SYM4045J	○	○ holder will be reused	
	45°	35°	2.0 (2.0-2.2)	SYM2035WT	○	○ holder will be reused
		2.0 (2.0-2.2)	SYM2045WT	○	○ holder will be reused	
		2.5 (2.5-2.7)	SYM2545WT	○	○ holder will be reused	
3.0 (3.0-3.2)		SYM3045WT	○	○ holder will be reused		
45°	4.0 (4.0-4.2)	SYM4045WT	○	○ holder will be reused		
	35°	1.0 (1.0-1.2)	SYM1035W	○	○	
		2.0 (2.0-2.2)	SYM2035W	○	○	
	45°	1.0 (1.0-1.2)	SYM1045W	○	○	
2.0 (2.0-2.2)		SYM2045W	○	○		
2.5 (2.5-2.7)		SYM2545W	○	○		
3.0 (3.0-3.2)		SYM3045W	○	○		
45°	4.0 (4.0-4.2)	SYM4045W	○	○		
	35°	1.0 (1.0-1.2)	SYM1035D	○	○	
		2.0 (2.0-2.2)	SYM2035D	○	○	
	45°	1.0 (1.0-1.2)	SYM1045D	○	○	
2.0 (2.0-2.2)		SYM2045D	○	○		
2.5 (2.5-2.7)		SYM2545D	○	○		
3.0 (3.0-3.2)		SYM3045D	○	○		
45°	4.0 (4.0-4.2)	SYM4045D	○	○		



Cryo Wet 35° & 45°



Cryo Dry 35° & 45°



Trim Cryo & Room Temperature



You can get this item only from SYNTEK

Jumbo Ultra & Histo

Histo (Wet) The recommended range 2µm to 0.2µm	50°	3.0 (3.0-3.2)	SYM3050H	<input type="radio"/>	<input type="radio"/>
		3.0 (3.0-3.2)	SYM3050HJ	<input type="radio"/>	<input type="radio"/> holder will be reused
		3.0 (3.0-3.2)	SYM3050HWT	<input type="radio"/>	<input type="radio"/> holder will be reused
		6.0 (6.0-6.2)	SYM6050H	<input type="radio"/>	<input type="radio"/>
Histo (Dry) The recommended range 2µm to 0.2µm	50°	3.0 (3.0-3.2)	SYM3050HD	<input type="radio"/>	<input type="radio"/>
		6.0 (6.0-6.2)	SYM6050HD	<input type="radio"/>	<input type="radio"/>

Trim	90°	Cryo & RM	SYM2590TM C	<input type="radio"/>	<input type="radio"/> Re-sharp only
	45°	Cryo & RM	SYM2545TM C	<input type="radio"/>	<input type="radio"/> Re-sharp only
	90°	Room Temperature	SYM2590TM RM	<input type="radio"/>	<input type="radio"/> Re-sharp only
	45°	Room Temperature	SYM2545TM RM	<input type="radio"/>	<input type="radio"/> Re-sharp only