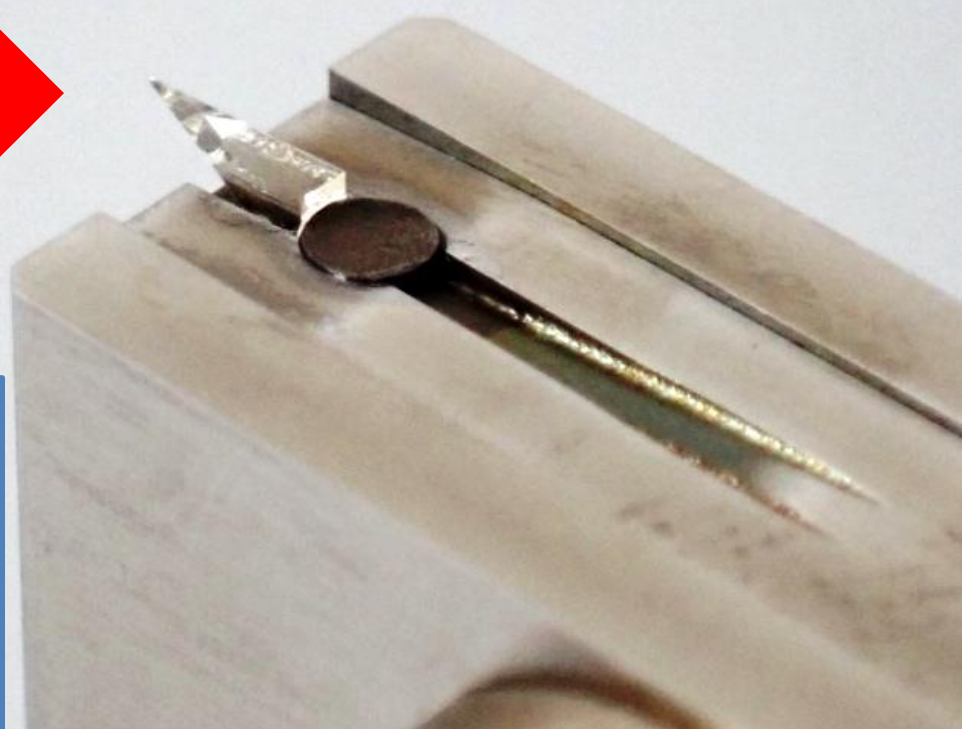
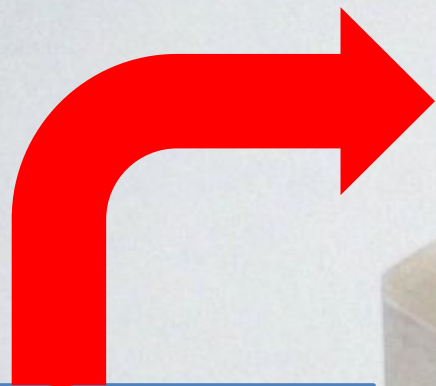


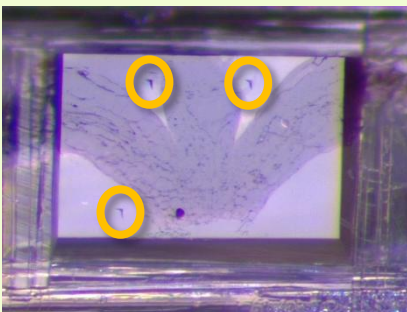
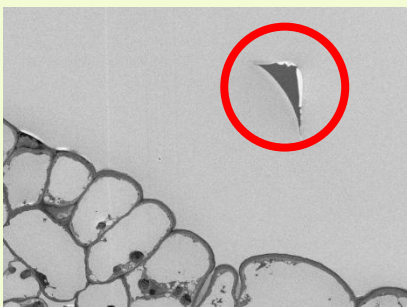
Marking Knife

For Array Tomography



《 Feature points 》

1. Marking closer area of sample allows for higher magnification imaging of the sample.
2. Accurate overlay is feasible by targeting marks.
3. The order of the samples can be determined by size of marks.

**SYNTEK CO., LTD.**

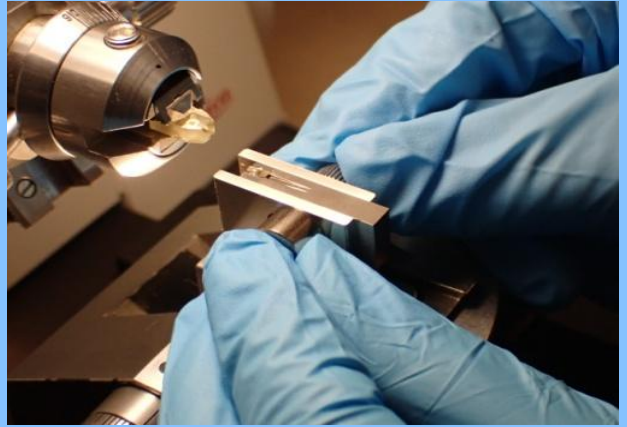
WEB SITE

How to use Marking Knife



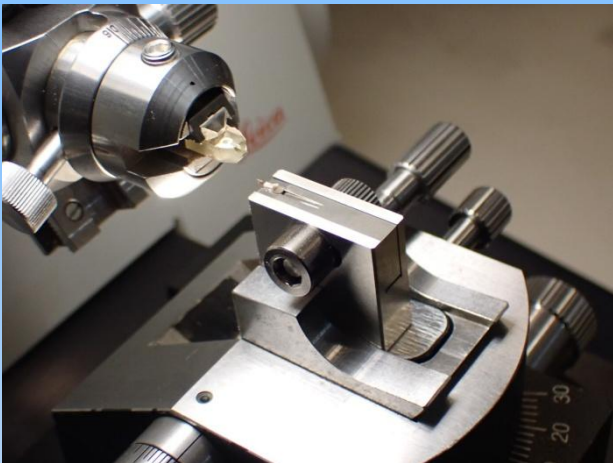
1

Securely clamp the marking knife to the ultra microtome.



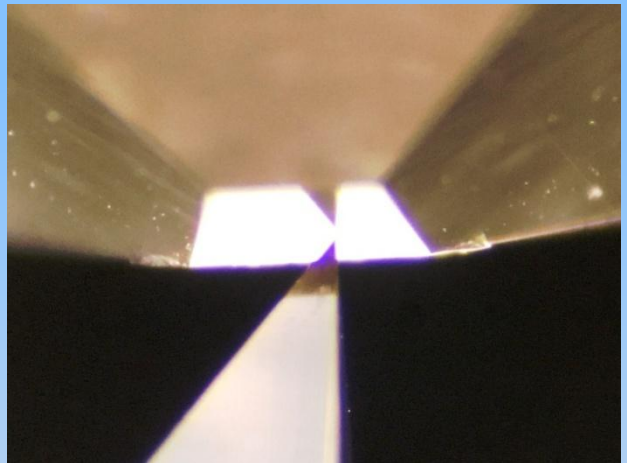
2

Loosen the left and right screws.



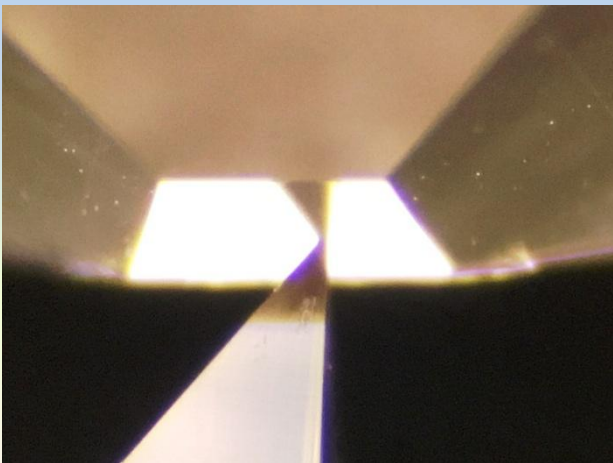
3

Advance the blade and tighten the screw firmly.



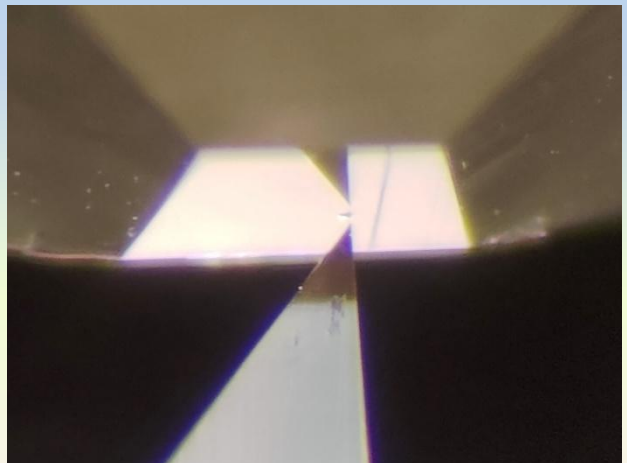
4

Bring the cutting edge to the sample.



5

Push in 1 μm at a time. Maximum depth is 50 μm .



6

When it is pulled out, a notch is made.