

# Direct Acting Sliding Shoe Ver. '22 for Helio machines

Produced by Syntek, Japan

## Point 1

*Lock the position from outside!*

## Point 2

*Shield inner mechanical parts from engraving oil and copper dusts!*

## Point 5

*Wheel's backlash is very few!*

## Point 3

*Exchange core (diamond) part easily!*

## Point 4

*Contact area is never rotate!*

## Point 1 "Lock a position"

When you use the spindle motion lock, it can keep core part at the same position. Even if someone touches a wheel, diamond part never moves involuntary.

**Lock**

**Un-Lock**



Protected section

## Point 2 "Oil & Dust-Proof"

Special coating has protection mechanism both inside and outside.

It keeps out oil and copper dusts during engraving.

### Point 3 "Easy changing process"

Our shoe is able to change the core part from the top side. It is easier, faster and safer than the original model.



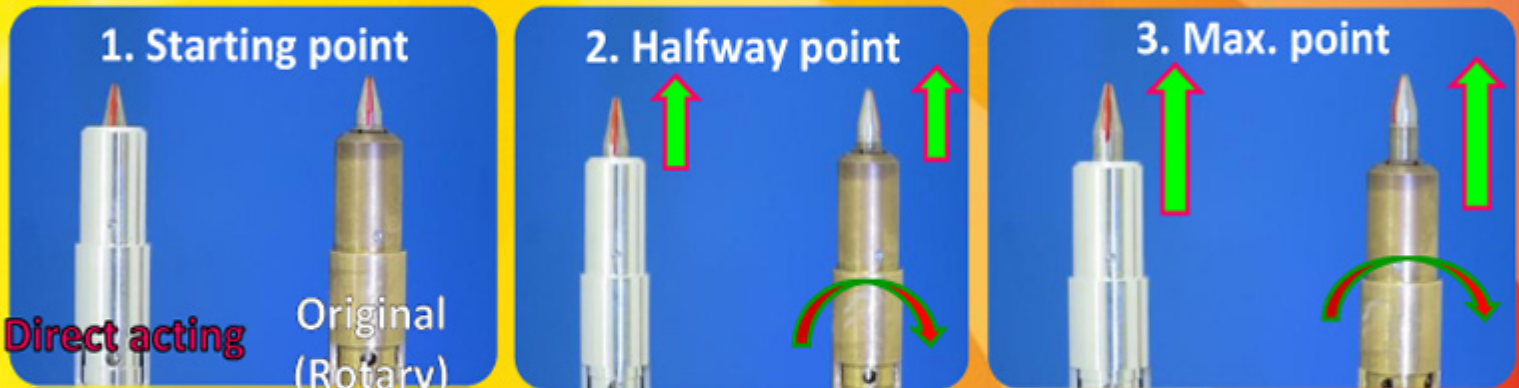
《 Direct acting by Syntek 》



Original (Rotary)

### Point 4 "No rotation"

About the original sliding shoe, tip(core) section rotates for arranging its length, but this sliding shoe is no rotation. Due to this linear movement prevents scratches by rotation and unevenly worn out of diamond.



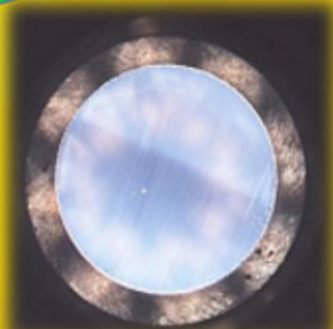
### Point 5 "High adjustment accuracy"

Our previous model had some backlash when a position put back (to short direction), but it was improved dramatically to stress-free performance.

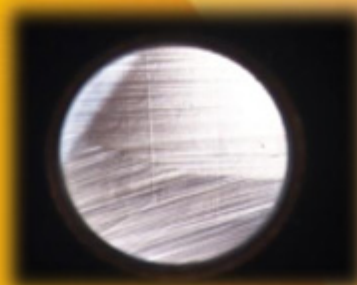
Please feel it for yourself!

Tidbits of information

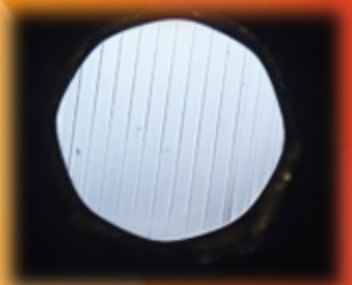
### Comparison of abrasion



Core part surface of Syntek model after 5,000 hours using



Core part surface of original shoes some hundred hours using



A FAREWELL TO SCRATCHES

