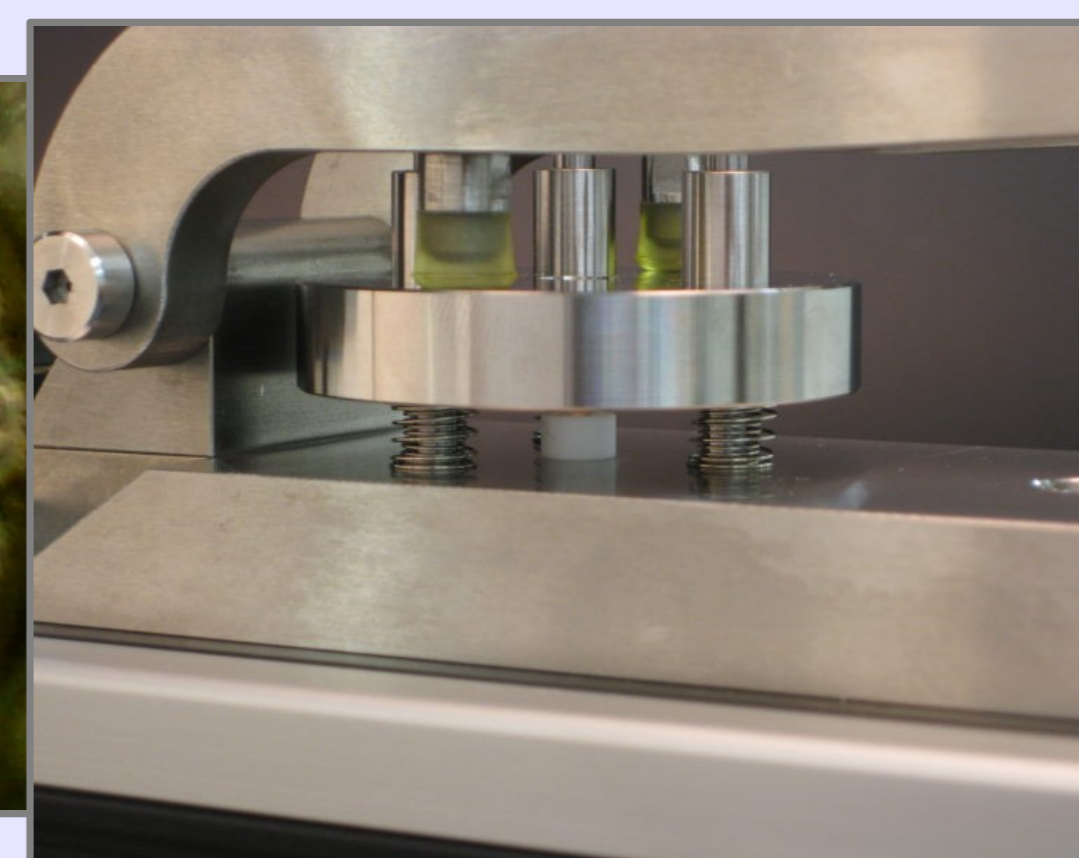
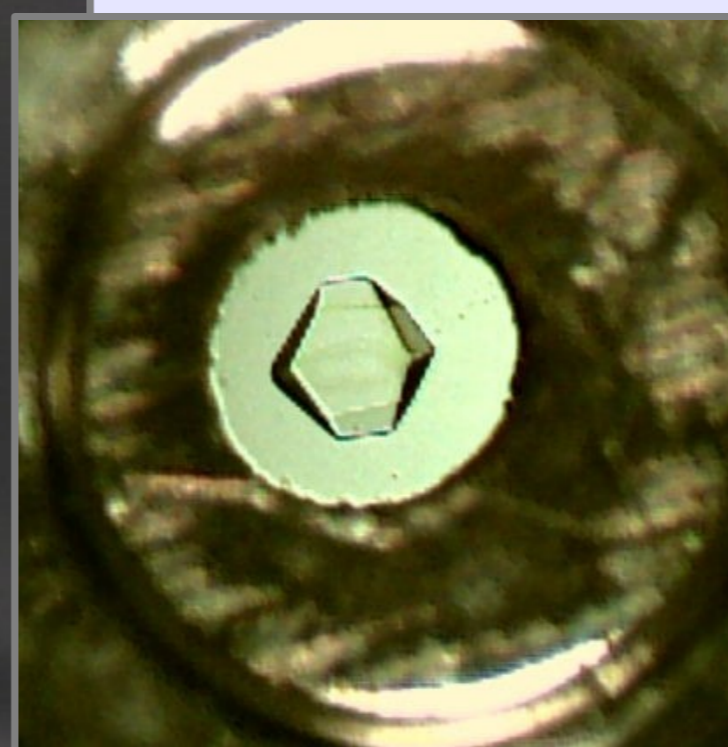
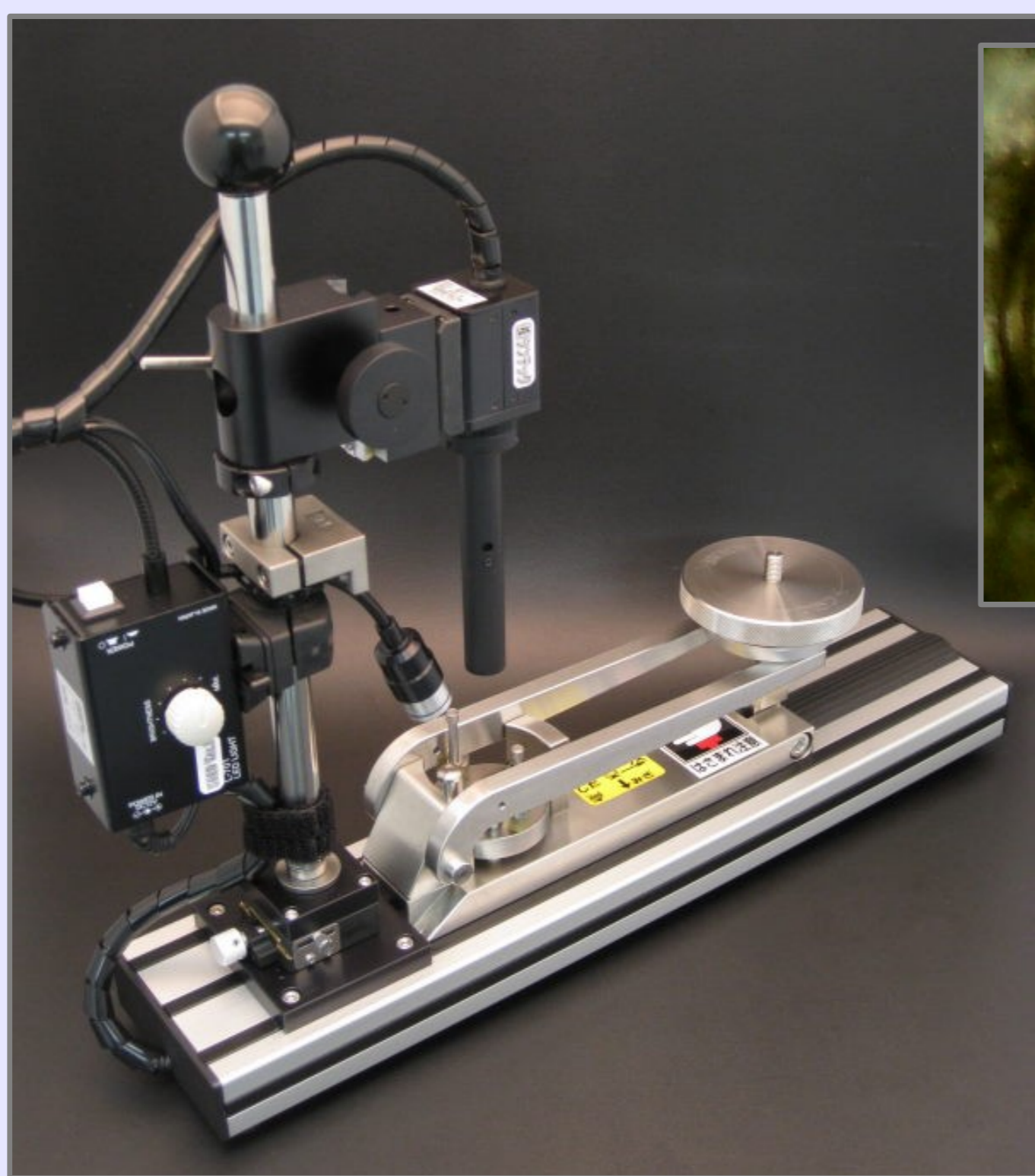


Syntek Technology for your laboratory !

NEW ITEM

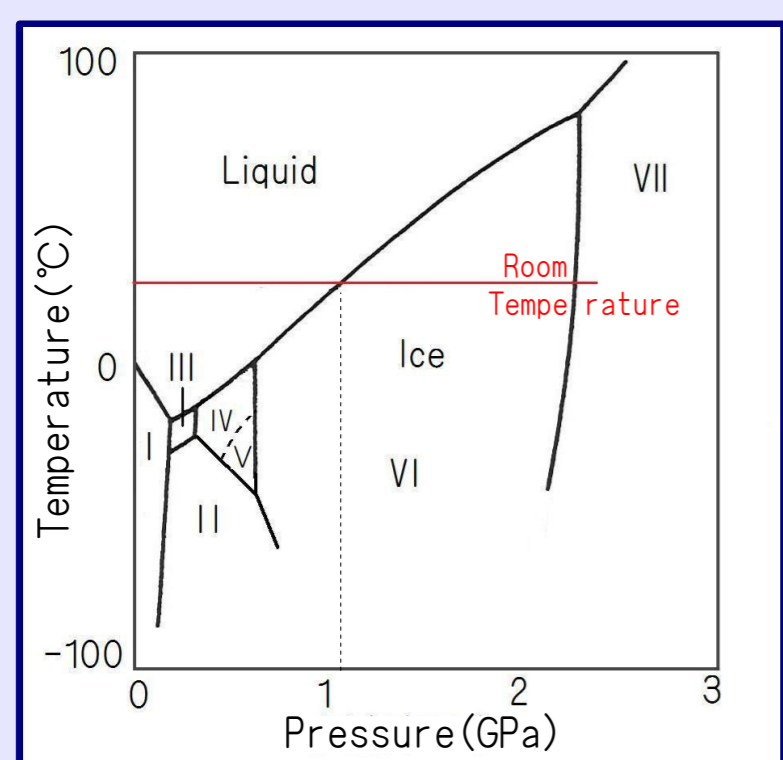
Educational cell 『SEED』



- ◆ New experimental & experience equipment in the field of high pressure is coming!
- ◆ Everyone can reach “1GPa” very easily.
- ◆ It's a teaching material for science education Collaborated with Prof. Yoshihisa Mori at Okayama University of Science.

●Experiment contents(example)

Observation of ice at room temperature



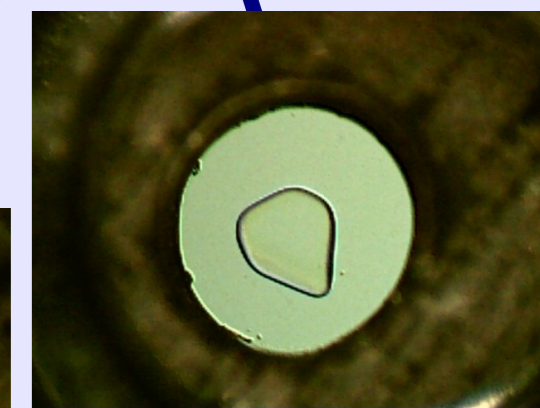
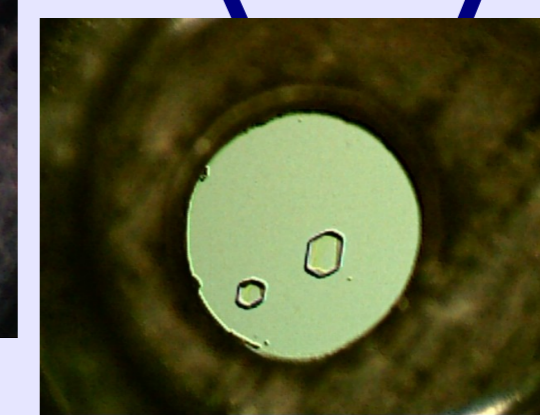
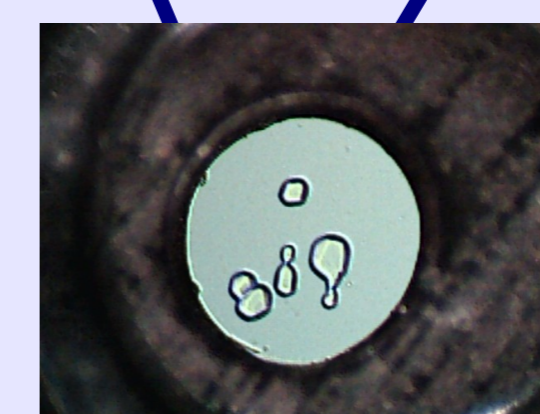
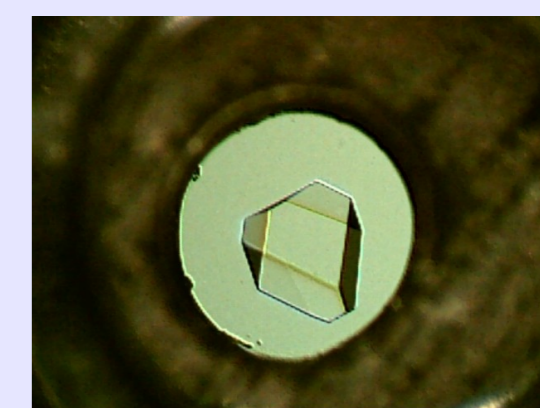
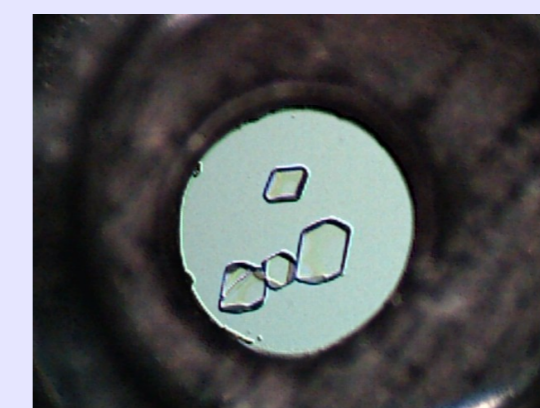
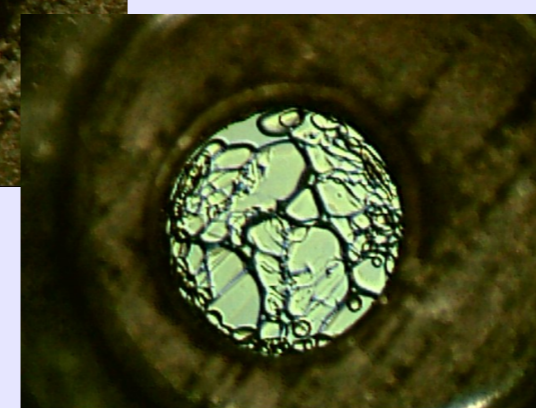
Phase diagram of water

●Observation result(example)

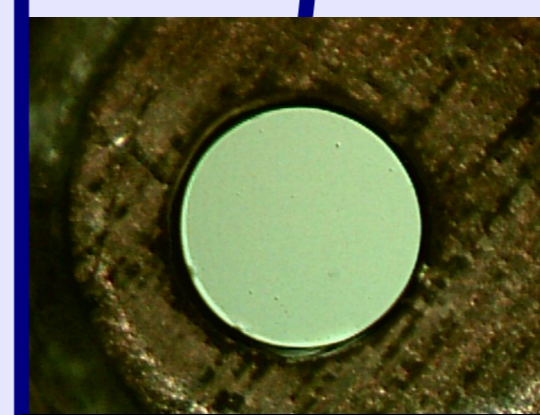
Pressure ↑



Ice VI



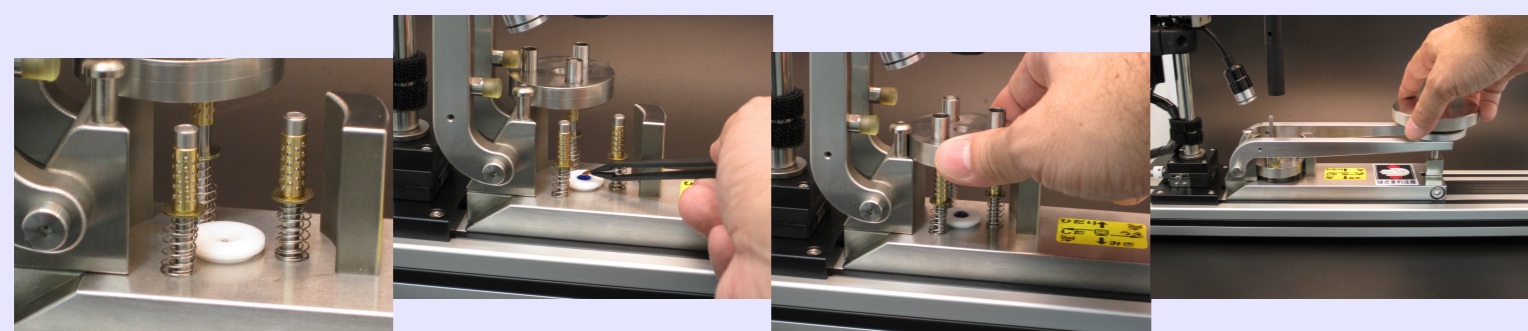
Water



※It is possible to observe on the screen of PC with USB2.0 (corresponds to Windows XP, VISTA)

●How to use? “3-STEPS approach”

- ①Put a guide sleeve to anvil and fill it with water(sample).
- ②Put a gasket into the water(sample).
- ③Fit up anvildisk,lever and pressurization wheel, then turn around the wheel.



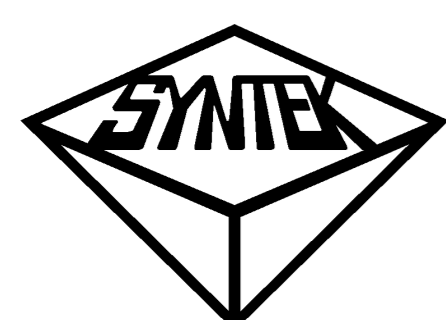
●SEED is used in numerous ways

- Open campus day experience study for school
- Science experiment
- At a briefing session of academic lab.

- You can observe crystal growth and melt increasing and decreasing pressure.
- You can also observe the changes by different test solution trying to make single crystal and more.

For all experimentalism people!!

Please feel free to contact us if you have further questions.



SYNTEK CO., LTD.

URL: <http://www.syntek.co.jp> E-mail : info@syntek.co.jp

LVP2-403, 75-1 Ono-cho, Tsurumi-ku, Yokohama, Kanagawa 230-0046, Japan
TEL : +81-(0)45-500-6603 FAX : +81-(0)45-501-6605