



Diamond knives

100% made in Japan

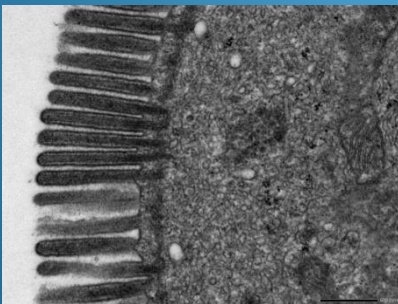
SYNTEK's diamond knives (SYM knives) are manufactured in Japan.

- ✓ Flexible and adaptable
- ✓ Hydrophilic treated from the beginning up to 3 years
- ✓ There's more to Knives change than technology

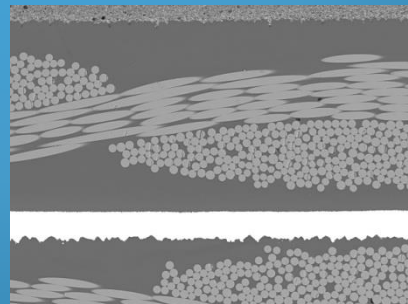


The angle of 50° for Histo combines the durability that can be used as trimming and the sharpness that allows 0.2 μm sample preparation.

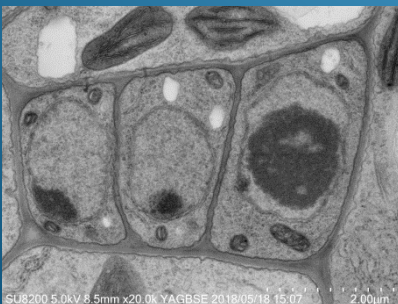
All products are cutting tested before shipment. Only those that passed are shipped.



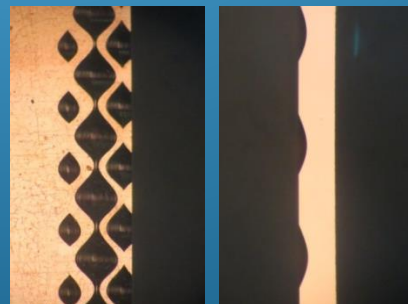
Biology (Creature)
TEM image of small intestine of mouse, 70nm,
Used tool :
SYM3045 (**Ultra**)



Material(Glass epoxy)
SEM image of cross section of glass-epoxy board and copper,
Used tool :
SYM3050H (**Histo**)



Biology (Plant)
FE-SEM image of Arabidopsis thaliana, 200nm,
Used tool :
SYM3050H (**Histo**)



Material(Cu)
Optical microscope image of cross section of copper plating for gravure printing cylinder,
Used tool :
SYM3050H (**Histo**)

(C) RIKEN IMS, Dr. Takeshi Matsui & Hachiro Iseki
(C) RIKEN CSRS, Dr. Kiminori Toyooka

(surface) (cross section)
*It gives damage to the cutting edge.





Ultra 35° & 45°



Histo 50°



You can get this item only from SYNTEK

Multi Grid Holder (Ultra)



You can get this item only from SYNTEK

Jumbo Ultra & Histo

Description	Angle	Width (mm)	Model No.	New	Exchange	
Ultra(Wet) The recommended range 200nm to 30 nm	35°	2.0 (2.0-2.2)	SYM2035	○	○	
		2.0 (2.0-2.2)	SYM2045	○	○	
		2.5 (2.5-2.7)	SYM2545	○	○	
	45°	3.0 (3.0-3.2)	SYM3045	○	○	
		35°	2.0 (2.0-2.2)	MGH2035	○	○
			2.0 (2.0-2.2)	MGH2045	○	○
	45°	2.5 (2.5-2.7)	MGH2545	○	○	
		3.0 (3.0-3.2)	MGH3045	○	○	
		35°	2.0 (2.0-2.2)	SYM2035J	○	○*
2.0 (2.0-2.2)	SYM2045J		○	○*		
45°	2.5 (2.5-2.7)		SYM2545J	○	○*	
	3.0 (3.0-3.2)	SYM3045J	○	○*		
Cryo(Dry & Wet) The recommended range 200nm to 30nm	35°	2.0 (2.0-2.2)	SYM2035D SYM2035W	○	○	
		45°	2.0 (2.0-2.2)	SYM2045D SYM2045W	○	○
	2.5 (2.5-2.7)		SYM2545D SYM2545W	○	○	
	3.0 (3.0-3.2)		SYM3045D SYM3045W	○	○	
	Histo(Dry & Wet) The recommended range 2µm to 0.2µm	50°	3.0 (3.0-3.2)	SYM3050H	○	○
				SYM3050HD	○	○
SYM3050HJ			○	○*		
SYM6050H			○	○		
6.0(6.0-6.2)		SYM6050HD	○	○		
	Trim	90°	SYM2590TM	○	○	
45°		SYM2545TM	○	○		

*Replacement is only the same specification (diamond width) as yours.

*Type: D=Dry, W=Wet, H=Histo, and TM=Trim

*For the preparation of 30-40nm specimens, it varies depending on conditions such as sample width, embedding condition, hardness and so on.

*MGH stands for Multi Grid Holder and SYM○○○○ J means our original Jumbo type.

* When we exchange MGH and SYM Jumbo, we will use same holder again. Only blade part will be changed to new one.